

Anti-PRKG1 antibody (609-659) (STJ502528)

STJ502528

GENERAL INFORMATION

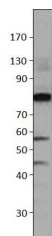
Product Type	Primary antibodies
Short Description	Rabbit polyclonal antibody anti-PRKG1 (609-659) is suitable for use in ELISA, Immunoprecipitation and Western Blot research applications.
Applications	ELISA/IP/WB
Host/Source	Rabbit
Reactivity	Human/Mouse/Rat

PRODUCT PROPERTIES

Clonality	Polyclonal
Clone ID	
Concentration	0.64-0.72 µg/µl
Conjugation	Unconjugated
Purification	Affinity Purified
Dilution Range	WB: 1:500 DB: 1:10, 000 ELISA: 1:10, 000 IP: 1:200
Formulation	Contains Tris, HCl/Glycine buffer pH 7.4-7.8, 30% Glycerol and 0.5% BSA, along with cryo-protective agents, Hepes, and long-term preservatives (0.02% Sodium Azide).
Isotype	IgG
Storage	Store at -20°C for long term storage. Avoid freeze-thaw cycles.
Instruction	

TARGET INFORMATION

Gene ID	5592
Gene Symbol	PRKG1
Uniprot ID	KGP1_HUMAN
Immunogen	Synthetic peptide taken within amino acid region 609-659 on human protein kinase G alpha subunit.
Immunogen Region	609-659
Specificity	
Immunogen Sequence	



Western blot with Anti-PRKG1 Antibody (STJ502528) with PKGA peptide. Antibody at 1:500 dilution in buffer.