

Anti-PGCE antibody (C-Term) (STJ502465)

STJ502465

GENERAL INFORMATION

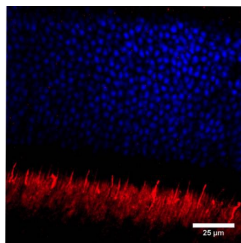
Product Type	Primary antibodies
Short Description	Rabbit polyclonal antibody anti-PGCE (C-Term) is suitable for use in Confocal Microscopy, ELISA, Immunocytochemistry, Immunofluorescence, Immunohistochemistry and Western Blot research applications.
Applications	CM/ELISA/ICC/IF/IHC/WB
Host/Source	Rabbit
Reactivity	Human/Mouse/Rat

PRODUCT PROPERTIES

Clonality	Polyclonal
Clone ID	
Concentration	0.75-1.20 µg/µl
Conjugation	Unconjugated
Purification	Affinity Purified
Dilution Range	WB: 1:500 DB: 1:10, 000 ELISA: 1:10, 000 IHC: 1:200 ICC: 1:200 IF: 1:200 CFM: 1:200
Formulation	Contains Tris, HCl/Glycine buffer pH 7.4-7.8, 30% Glycerol and 0.5% BSA, along with cryo-protective agents, Hepes, and long-term preservatives (0.02% Sodium Azide).
Isotype	IgG
Storage Instruction	Store at -20°C for long term storage. Avoid freeze-thaw cycles.

TARGET INFORMATION

Gene ID	79222
Gene Symbol	Gucy2e
Uniprot ID	GUC2E_RAT
Immunogen	Synthetic C-terminal peptide corresponding to unique amino acid sequences on Particulate Guanylyl Cyclase E protein.
Immunogen Region	C-Term
Specificity	
Immunogen Sequence	



Immunofluorescence of mouse tissue with Anti-PGCE primary antibody (STJ502465). Red: Antibody immunoreactivity. Blue: Nuclei. Photoreceptor outer segments are labelled by the antibody.

This product is suitable for in-vitro studies under the RESEARCH USE ONLY [RUO] licence. This product must not be used as for diagnostic or other medical purposes.
St John's Laboratory Ltd, Knowledge Dock Business Centre, University Way, London, E16 2RD | Tel: 0208 223 3081