

## Anti-Particulate Guanylate Cyclase C antibody (C-Term) (STJ502459)

STJ502459

### GENERAL INFORMATION

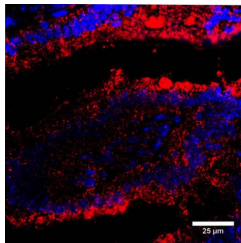
<b>Product Type</b>	Primary antibodies
<b>Short Description</b>	Rabbit polyclonal antibody anti-Particulate Guanylate Cyclase C (C-Term) is suitable for use in Confocal Microscopy, ELISA, Immunocytochemistry, Immunofluorescence, Immunohistochemistry, Immunoprecipitation and Western Blot research applications.
<b>Applications</b>	CM/ELISA/ICC/IF/IHC/IP/WB
<b>Host/Source</b>	Rabbit
<b>Reactivity</b>	Human/Mouse/Rat

### PRODUCT PROPERTIES

<b>Clonality</b>	Polyclonal
<b>Clone ID</b>	
<b>Concentration</b>	0.75-1.20 µg/µl
<b>Conjugation</b>	Unconjugated
<b>Purification</b>	Affinity Purified
<b>Dilution Range</b>	WB: 1:500 DB: 1:10, 000 ELISA: 1:10, 000 IHC: 1:200 ICC: 1:200 IF: 1:200 CFM: 1:200
<b>Formulation</b>	Contains Tris, HCl/Glycine buffer pH 7.4-7.8, 30% Glycerol and 0.5% BSA, along with cryo-protective agents, Hepes, and long-term preservatives (0.02% Sodium Azide).
<b>Isotype</b>	IgG
<b>Storage Instruction</b>	Store at -20°C for long term storage. Avoid freeze-thaw cycles.

### TARGET INFORMATION

<b>Gene ID</b>	25711
<b>Gene Symbol</b>	Gucy2c
<b>Uniprot ID</b>	GUC2C_RAT
<b>Immunogen</b>	Synthetic C-terminal peptide corresponding to unique amino acid sequences on Particulate Guanylyl Cyclase C protein.
<b>Immunogen Region</b>	C-Term
<b>Specificity</b>	
<b>Immunogen Sequence</b>	



Immunofluorescence of mouse small intestine with Anti-Particulate Guanylate Cyclase C primary antibody (STJ502459). Red: Antibody immunoreactivity. Blue: Nuclei. Staining is found on the periphery of intestinal villi.

This product is suitable for in-vitro studies under the RESEARCH USE ONLY [RUO] licence. This product must not be used as for diagnostic or other medical purposes.  
St John's Laboratory Ltd, Knowledge Dock Business Centre, University Way, London, E16 2RD | Tel: 0208 223 3081