

Anti-PDE9A antibody (STJ502389)

STJ502389

GENERAL INFORMATION

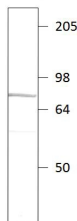
Product Type	Primary antibodies
Short Description	Rabbit polyclonal antibody anti-PDE9A is suitable for use in Confocal Microscopy, ELISA, Immunocytochemistry, Immunofluorescence, Immunohistochemistry, Immunoprecipitation and Western Blot research applications.
Applications	CM/ELISA/ICC/IF/IHC/IP/WB
Host/Source	Rabbit
Reactivity	Human/Mouse/Rat

PRODUCT PROPERTIES

Clonality	Polyclonal
Clone ID	
Concentration	0.55 µg/µl
Conjugation	Unconjugated
Purification	Affinity Purified
Dilution Range	WB: 1:500 DB: 1:100 ELISA: 1:100 IP: 1:250 IHC: 1:100 ICC: 1:100 IF: 1:100 CFM: 1:100
Formulation	Contains Tris, HCl/Glycine buffer pH 7.4-7.8, 30% Glycerol and 0.5% BSA, along with cryo-protective agents, Hepes, and long-term preservatives (0.02% Sodium Azide).
Isotype	IgG
Storage Instruction	Store at -20°C for long term storage. Avoid freeze-thaw cycles.

TARGET INFORMATION

Gene ID	5152
Gene Symbol	PDE9A
Uniprot ID	PDE9A_HUMAN
Immunogen	Synthetic cyclic peptide common to all PDE9A variants.
Immunogen Region	
Specificity	Does not cross-react with PDE9B protein or any other PDE family members.
Immunogen Sequence	



Western blot with Anti-PDE9A Antibody (STJ502389) with PD9A peptide. Antibody at 1:500 dilution in buffer.