

Anti-PDE6B antibody (STJ502356)

STJ502356

GENERAL INFORMATION

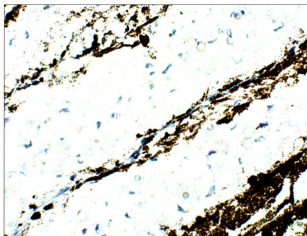
Product Type	Primary antibodies
Short Description	Rabbit polyclonal antibody anti-PDE6B is suitable for use in ELISA, Confocal Microscopy, Immunocytochemistry, Immunofluorescence, Immunohistochemistry and Western Blot research applications.
Applications	ELISA/CM/ICC/IF/IHC/WB
Host/Source	Rabbit
Reactivity	Bovine/Human/Mouse/Pig/Rat

PRODUCT PROPERTIES

Clonality	Polyclonal
Clone ID	
Concentration	0.5 µg/µl
Conjugation	Unconjugated
Purification	Affinity Purified
Dilution Range	WB: 1:500 DB: 1:10, 000 ELISA: 1:10, 000 IP: 1:200 IHC: 1:200 ICC: 1:200 IF: 1:200 CFM: 1:200
Formulation	Contains Tris, HCl/Glycine buffer pH 7.4-7.8, 30% Glycerol and 0.5% BSA, along with cryo-protective agents, Hepes, and long-term preservatives (0.02% Sodium Azide).
Isotype	IgG
Storage Instruction	Store at -20°C for long term storage. Avoid freeze-thaw cycles.

TARGET INFORMATION

Gene ID	5158
Gene Symbol	PDE6B
Uniprot ID	PDE6B_HUMAN
Immunogen	Synthetic cyclic peptide common to all PDE6 Beta variants
Immunogen Region	
Immunogen Specificity	
Immunogen Sequence	



Immunohistochemistry of rat tissue with Anti-PDE6B primary antibody (STJ502356) at 1:50 dilution in Buffer. Section was treated with DAB and Haematoxylin stain. Magnification is at 40X.