

Anti-PDE5A antibody (120-170) (STJ502349)

STJ502349

GENERAL INFORMATION

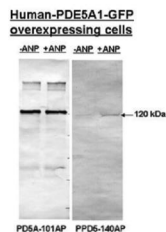
Product Type	Primary antibodies
Short Description	Rabbit polyclonal antibody anti-PDE5A (120-170) is suitable for use in Confocal Microscopy, ELISA, Immunocytochemistry, Immunofluorescence, Immunohistochemistry, Immunoprecipitation and Western Blot research applications.
Applications	CM/ELISA/ICC/IF/IHC/IP/WB
Host/Source	Rabbit
Reactivity	Chicken/Human/Mouse/Rat

PRODUCT PROPERTIES

Clonality	Polyclonal
Clone ID	
Concentration	0.55-0.60 µg/µl
Conjugation	Unconjugated
Purification	Affinity Purified
Dilution Range	WB: 1:500-1:1,000 DB: 1:10,000 ELISA: 1:10,000 IP: 1:250 IHC: 1:250 ICC: 1:250 IF: 1:250 CFM: 1:250
Formulation	Contains Tris, HCl/Glycine buffer pH 7.4-7.8, 30% Glycerol and 0.5% BSA, along with cryo-protective agents, Hepes, and long-term preservatives (0.02% Sodium Azide).
Isotype	IgG
Storage Instruction	Store at -20°C for long term storage. Avoid freeze-thaw cycles.

TARGET INFORMATION

Gene ID	8654
Gene Symbol	PDE5A
Uniprot ID	PDE5A_HUMAN
Immunogen	Synthetic peptide common to all PDE5A variants taken within amino acid region 120-170 on human PDE5A protein.
Immunogen Region	120-170
Specificity	Does not cross-react with other PDE family members.
Immunogen Sequence	



Left) Western blot with Anti-PDE5A Antibody (STJ502349) at 1:500 dilution in buffer. Overexpressing cells were treated with or without ANP. 1:500 in antibody dilution in buffer. Blot was stripped and re-probed with STJ502621.

This product is suitable for in-vitro studies under the RESEARCH USE ONLY [RUO] licence. This product must not be used as for diagnostic or other medical purposes.
St John's Laboratory Ltd, Knowledge Dock Business Centre, University Way, London, E16 2RD | Tel: 0208 223 3081