

Anti-PDE4D7 antibody (STJ502340)

STJ502340

GENERAL INFORMATION

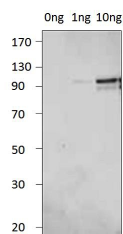
Product Type	Primary antibodies
Short Description	Rabbit polyclonal antibody anti-PDE4D7 is suitable for use in ELISA, Immunoprecipitation and Western Blot research applications.
Applications	ELISA/IP/WB
Host/Source	Rabbit
Reactivity	Chicken/Mouse/Rat

PRODUCT PROPERTIES

Clonality	Polyclonal
Clone ID	
Concentration	0.2 µg/µl
Conjugation	Unconjugated
Purification	Affinity Purified
Dilution Range	WB: 1:500 DB: 1:10, 000 ELISA: 1:10, 000 IP: 1:150
Formulation	Contains Tris, HCl/Glycine buffer pH 7.4-7.8, 30% Glycerol and 0.5% BSA, along with cryo-protective agents, Hepes, and long-term preservatives (0.02% Sodium Azide).
Isotype	IgG
Storage Instruction	Store at -20°C for long term storage. Avoid freeze-thaw cycles.

TARGET INFORMATION

Gene ID	238871
Gene Symbol	Pde4d
Uniprot ID	PDE4D_MOUSE
Immunogen	Synthetic peptide corresponding to unique amino acid sequence on PDE4D7 variant.
Immunogen Region	
Specificity	Does not crossDoes not cross react with other PDE family members including PDE4A, PDE4B or PDE4C.
Immunogen Sequence	



Western blot with Anti-PDE4D7 Antibody (STJ502340) on PD4D7 peptide. Antibody at 1:500 dilution in buffer.