

## Anti-PDE4D1 antibody (N-Term) (STJ502322)

STJ502322

### GENERAL INFORMATION

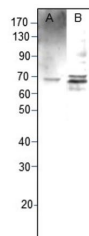
<b>Product Type</b>	Primary antibodies
<b>Short Description</b>	Rabbit polyclonal antibody anti-PDE4D1 (N-Term) is suitable for use in ELISA, Immunoprecipitation and Western Blot research applications.
<b>Applications</b>	ELISA/IP/WB
<b>Host/Source</b>	Rabbit
<b>Reactivity</b>	Chicken/Mouse/Rat

### PRODUCT PROPERTIES

<b>Clonality</b>	Polyclonal
<b>Clone ID</b>	
<b>Concentration</b>	0.73 µg/µl
<b>Conjugation</b>	Unconjugated
<b>Purification</b>	Affinity Purified
<b>Dilution Range</b>	WB: 1:500 DB: 1:10, 000 ELISA: 1:10, 000 IP: 1:150
<b>Formulation</b>	Contains Tris, HCl/Glycine buffer pH 7.4-7.8, 30% Glycerol and 0.5% BSA, along with cryo-protective agents, Hepes, and long-term preservatives (0.02% Sodium Azide).
<b>Isotype</b>	IgG
<b>Storage</b>	Store at -20°C for long term storage. Avoid freeze-thaw cycles.
<b>Instruction</b>	

### TARGET INFORMATION

<b>Gene ID</b>	
<b>Gene Symbol</b>	
<b>Uniprot ID</b>	
<b>Immunogen</b>	Synthetic peptide from unique region near N-terminus of PDE4D1 variant.
<b>Immunogen Region</b>	N-Term
<b>Specificity</b>	Will not cross react with other PDE4D variants or other PDE family members.
<b>Immunogen Sequence</b>	



Western blot with Anti-PDE4D1 Antibody (STJ502322) on a) PD4D1 peptide and b) rat kidney at 1:500 dilution in buffer.