

Anti-PDE4B antibody (N-Term) (STJ502299)

STJ502299

GENERAL INFORMATION

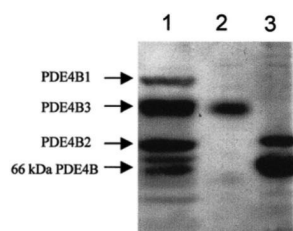
Product Type	Primary antibodies
Short Description	Rabbit polyclonal antibody anti-PDE4B (N-Term) is suitable for use in Confocal Microscopy, ELISA, Immunocytochemistry, Immunofluorescence, Immunohistochemistry, Immunoprecipitation and Western Blot research applications.
Applications	CM/ELISA/ICC/IF/IHC/IP/WB
Host/Source	Rabbit
Reactivity	Human/Mouse/Rat

PRODUCT PROPERTIES

Clonality	Polyclonal
Clone ID	
Concentration	0.68 µg/µl
Conjugation	Unconjugated
Purification	Affinity Purified
Dilution Range	WB: 1:500-1:1,000 DB: 1:10,000 ELISA: 1:10,000 IP: 1:350 IHC: 1:250 ICC: 1:250 IF: 1:250 CFM: 1:250
Formulation	Contains Tris, HCl/Glycine buffer pH 7.4-7.8, 30% Glycerol and 0.5% BSA, along with cryo-protective agents, Hepes, and long-term preservatives (0.02% Sodium Azide).
Isotype	IgG
Storage Instruction	Store at -20°C for long term storage. Avoid freeze-thaw cycles.

TARGET INFORMATION

Gene ID	5142
Gene Symbol	PDE4B
Uniprot ID	PDE4B_HUMAN
Immunogen	Synthetic peptide common to all PDE4B subtypes taken near N-terminal
Immunogen Region	N-Term
Specificity	Does not cross-react with other PDE family members such as PDE4A, PDE4C. PD4B-201AP may have minor crossreactivity to PDE4D. Antibody PD4B-212AP does not have any cross reactivity with any other PDE family members other than: PDE4B1, PDE4B2, PDE4B3,
Immunogen Sequence	



Western blot with Anti-PDE4B Antibody (STJ502299) with: 1) PD4B peptide, 2) recombinant PDE4B3 protein, 3) Rat testis. Antibody at 1:500 dilution in buffer.

This product is suitable for in-vitro studies under the RESEARCH USE ONLY [RUO] licence. This product must not be used as for diagnostic or other medical purposes.
St John's Laboratory Ltd, Knowledge Dock Business Centre, University Way, London, E16 2RD | Tel: 0208 223 3081