

Anti-PDE4A antibody (N-Term) (STJ502293)

STJ502293

GENERAL INFORMATION

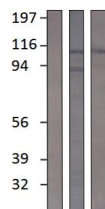
Product Type	Primary antibodies
Short Description	Rabbit polyclonal antibody anti-PDE4A (N-Term) is suitable for use in Confocal Microscopy, ELISA, Immunocytochemistry, Immunofluorescence, Immunohistochemistry, Immunoprecipitation and Western Blot research applications.
Applications	CM/ELISA/ICC/IF/IHC/IP/WB
Host/Source	Rabbit
Reactivity	Human/Mouse/Rat

PRODUCT PROPERTIES

Clonality	Polyclonal
Clone ID	
Concentration	0.70-1.0 µg/µl
Conjugation	Unconjugated
Purification	Affinity Purified
Dilution Range	WB: 1:750-1:1, 000 DB: 1:10, 000 ELISA: 1:10, 000 IP: 1:250 IHC: 1:250 ICC: 1:250 IF: 1:250 CFM: 1:250
Formulation	Contains Tris, HCl/Glycine buffer pH 7.4-7.8, 30% Glycerol and 0.5% BSA, along with cryo-protective agents, Hepes, and long-term preservatives (0.02% Sodium Azide).
Isotype	IgG
Storage Instruction	Store at -20°C for long term storage. Avoid freeze-thaw cycles.

TARGET INFORMATION

Gene ID	5141
Gene Symbol	PDE4A
Uniprot ID	PDE4A_HUMAN
Immunogen	Synthetic cyclic peptide specific only for PDE4A5 protein. N-terminal sequence modified to achieve desired antigenicity and linker for covalent coupling to blue carrier protein.
Immunogen Region	N-Term
Specificity	Does not cross-react with other PDE family members.
Immunogen Sequence	



Western blot with Anti-PDE4A Antibody (STJ502293). (A/B) Preimmune (C) STJ502293, (A) with PD4A1 peptide, (B/C) with PD4A5 peptide. Antibody at 1:500 dilution in buffer.