

Anti-PDE4B antibody (C-Term) (STJ502276)

STJ502276

GENERAL INFORMATION

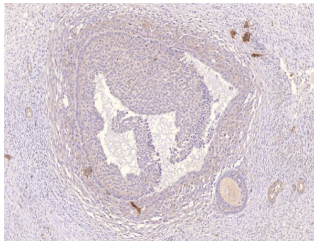
Product Type	Primary antibodies
Short Description	Rabbit polyclonal antibody anti-PDE4B (C-Term) is suitable for use in Confocal Microscopy, ELISA, Immunocytochemistry, Immunofluorescence, Immunohistochemistry, Immunoprecipitation and Western Blot research applications.
Applications	CM/ELISA/ICC/IF/IHC/IP/WB
Host/Source	Rabbit
Reactivity	Human/Mouse/Rat

PRODUCT PROPERTIES

Clonality	Polyclonal
Clone ID	
Concentration	0.57 µg/µl
Conjugation	Unconjugated
Purification	Affinity Purified
Dilution	WB: 1:500
Range	DB: 1:10, 000 ELISA: 1:10, 000 IP: 1:150
Formulation	Contains Tris, HCl/Glycine buffer pH 7.4-7.8, 30% Glycerol and 0.5% BSA, along with cryo-protective agents, Hepes, and long-term preservatives (0.02% Sodium Azide).
Isotype	IgG
Storage	Store at -20°C for long term storage. Avoid freeze-thaw cycles.
Instruction	

TARGET INFORMATION

Gene ID	5142
Gene Symbol	PDE4B
Uniprot ID	PDE4B_HUMAN
Immunogen	C-terminal cyclic peptide unique to all PDED subtypes variants.
Immunogen Region	C-Term
Specificity	Does not cross react with PDE4A, PDE4B, PDE4D6, PDE4D7, PDE4D8, PDE4D9, OR PDE4C.
Immunogen Sequence	



Immunohistochemistry of human ovarian medulla with Anti-PDE4B primary antibody (STJ502276) at 1:50 dilution in buffer.

This product is suitable for in-vitro studies under the RESEARCH USE ONLY [RUO] licence. This product must not be used as for diagnostic or other medical purposes.
St John's Laboratory Ltd, Knowledge Dock Business Centre, University Way, London, E16 2RD | Tel: 0208 223 3081