

Anti-PDE3B antibody (1060-1110) (STJ502269)

STJ502269

GENERAL INFORMATION

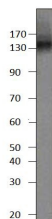
Product Type	Primary antibodies
Short Description	Goat polyclonal antibody anti-PDE3B (1060-1110) is suitable for use in ELISA, Immunoprecipitation and Western Blot research applications.
Applications	ELISA/IP/WB
Host/Source	Goat
Reactivity	Chicken/Human/Monkey/Mouse/Rat

PRODUCT PROPERTIES

Clonality	Polyclonal
Clone ID	
Concentration	0.55 µg/µl
Conjugation	Unconjugated
Purification	Affinity Purified
Dilution Range	WB: 1:500 DB: 1:10, 000 ELISA: 1:10, 000 IP: 1:200 IHC: 1:500 ICC: 1:500 IF: 1:500 CFM: 1:500
Formulation	Contains Tris, HCl/Glycine buffer pH 7.4-7.8, 30% Glycerol and 0.5% BSA, along with cryo-protective agents, Hepes, and long-term preservatives (0.02% Sodium Azide).
Isotype	IgG
Storage Instruction	Store at -20°C for long term storage. Avoid freeze-thaw cycles.

TARGET INFORMATION

Gene ID	29516
Gene Symbol	Pde3b
Uniprot ID	PDE3B_RAT
Immunogen	Synthetic peptide taken within amino acid region 1060-1110 on human PDE3B protein.
Immunogen Region	1060-1110
Specificity	Does not cross react with PDE4A variants nor with any other PDE family members. This antibody will recognize PDE3B variants.
Immunogen Sequence	



Western blot with Anti-PDE3B Antibody (STJ502269) on PD38 peptide. Antibody at 1:500 dilution in buffer.

This product is suitable for in-vitro studies under the RESEARCH USE ONLY [RUO] licence. This product must not be used as for diagnostic or other medical purposes.
St John's Laboratory Ltd, Knowledge Dock Business Centre, University Way, London, E16 2RD | Tel: 0208 223 3081