

Anti-PDE10A antibody (1-50) (STJ502205)

STJ502205

GENERAL INFORMATION

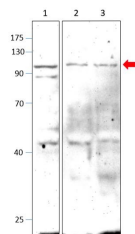
Product Type	Primary antibodies
Short Description	Rabbit polyclonal antibody anti-PDE10A (1-50) is suitable for use in ELISA, Immunoprecipitation and Western Blot research applications.
Applications	ELISA/IP/WB
Host/Source	Rabbit
Reactivity	Rat

PRODUCT PROPERTIES

Clonality	Polyclonal
Clone ID	
Concentration	0.75 µg/µl
Conjugation	Unconjugated
Purification	Affinity Purified
Dilution Range	WB: 1:500 DB: 1:10, 000 ELISA: 1:10, 000 IP: 1:200
Formulation	Contains Tris, HCl/Glycine buffer pH 7.4-7.8, 30% Glycerol and 0.5% BSA, along with cryo-protective agents, Hepes, and long-term preservatives (0.02% Sodium Azide).
Isotype	IgG
Storage Instruction	Store at -20°C for long term storage. Avoid freeze-thaw cycles.

TARGET INFORMATION

Gene ID	10846
Gene Symbol	PDE10A
Uniprot ID	PDE10_HUMAN
Immunogen	Synthetic peptide taken within amino acid region 1-50 on human PDE10A2 protein.
Immunogen Region	1-50
Specificity	
Immunogen Sequence	



Lane 2) Western blot with Anti-PDE10A Antibody (STJ502205) of rat striatum at 1:500 dilution in buffer.