

Anti-PDE10A antibody (250-325) (STJ502199)

STJ502199

GENERAL INFORMATION

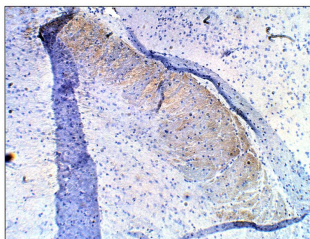
Product Type	Primary antibodies
Short Description	Rabbit polyclonal antibody anti-PDE10A (250-325) is suitable for use in Confocal Microscopy, ELISA, Immunocytochemistry, Immunofluorescence, Immunohistochemistry, Immunoprecipitation and Western Blot research applications.
Applications	CM/ELISA/ICC/IF/IHC/IP/WB
Host/Source	Rabbit
Reactivity	Human/Monkey/Mouse/Rat

PRODUCT PROPERTIES

Clonality	Polyclonal
Clone ID	
Concentration	0.7 µg/µl
Conjugation	Unconjugated
Purification	Affinity Purified
Dilution Range	WB: 1:500 DB: 1:10, 000 ELISA: 1:10, 000 IP: 1:200 IHC: 1:100-1:150 ICC: 1:100-1:150 IF: 1:100-1:150 CFM: 1:100-1:150
Formulation	Contains Tris, HCl/Glycine buffer pH 7.4-7.8, 30% Glycerol and 0.5% BSA, along with cryo-protective agents, Hepes, and long-term preservatives (0.02% Sodium Azide).
Isotype	IgG
Storage Instruction	Store at -20°C for long term storage. Avoid freeze-thaw cycles.

TARGET INFORMATION

Gene ID	10846
Gene Symbol	PDE10A
Uniprot ID	PDE10_HUMAN
Immunogen	Synthetic peptide (Human) taken against a common sequence near the 250-325 amino acids downstream of N-terminal region of PDE10A. Synthetic MAP.
Immunogen Region	250-325
Specificity	This antibody has no cross-reactivity against any other PDE family members tested so far. This antibody will detect all PDE10A variants and subtypes.
Immunogen Sequence	



Immunohistochemistry with Anti-PDE10A Antibody (STJ502199) at 1:100 dilution in Buffer. DAB (brown) staining and Haematoxylin QS (blue) counterstain. 40X magnification. FFPE section.

This product is suitable for in-vitro studies under the RESEARCH USE ONLY [RUO] licence. This product must not be used as for diagnostic or other medical purposes.
St John's Laboratory Ltd, Knowledge Dock Business Centre, University Way, London, E16 2RD | Tel: 0208 223 3081