

Anti-PAR2 antibody (300-370) (STJ502113)

STJ502113

GENERAL INFORMATION

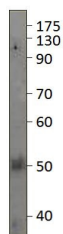
Product Type	Primary antibodies
Short Description	Rabbit polyclonal antibody anti-PAR2 (300-370) is suitable for use in ELISA, Immunohistochemistry, Immunoprecipitation and Western Blot research applications.
Applications	ELISA/IHC/IP/WB
Host/Source	Rabbit
Reactivity	Chimpanzee/Human/Monkey/Mouse/Rat

PRODUCT PROPERTIES

Clonality	Polyclonal
Clone ID	
Concentration	0.62 µg/µl
Conjugation	Unconjugated
Purification	Affinity Purified
Dilution Range	WB: 1:250 ELISA: 1:15, 00-1:20, 000 IP: 1:200 IHC: 1:100 ICC: 1:100 IF: 1:100
Formulation	Contains Tris, HCl/Glycine buffer pH 7.4-7.8, 30% Glycerol and 0.5% BSA, along with cryo-protective agents, Hepes, and long-term preservatives (0.02% Sodium Azide).
Isotype	IgG
Storage Instruction	Store at -20°C for long term storage. Avoid freeze-thaw cycles.

TARGET INFORMATION

Gene ID	14063
Gene Symbol	F2rl1
Uniprot ID	PAR2_MOUSE
Immunogen	Synthetic peptide taken within amino acid region 300-370 of mouse PAR2.
Immunogen Region	300-370
Specificity	This antibody is directed against a cytoplasmic region of PAR2.
Immunogen Sequence	



Western blot with Anti-PAR2 Antibody (STJ502113) with PAR2 peptide on at 1:500 dilution in buffer.