

Anti-PAR1 antibody (390-440) (STJ502110)

STJ502110

GENERAL INFORMATION

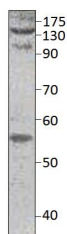
Product Type	Primary antibodies
Short Description	Rabbit polyclonal antibody anti-PAR1 (390-440) is suitable for use in ELISA, Immunoprecipitation and Western Blot research applications.
Applications	ELISA/IP/WB
Host/Source	Rabbit
Reactivity	Human/Mouse/Rat

PRODUCT PROPERTIES

Clonality	Polyclonal
Clone ID	
Concentration	0.63-0.65 µg/µl
Conjugation	Unconjugated
Purification	Affinity Purified
Dilution Range	WB: 1:250 DB: 1:10, 000 ELISA: 1:10, 000 IP: 1:200
Formulation	Contains Tris, HCl/Glycine buffer pH 7.4-7.8, 30% Glycerol and 0.5% BSA, along with cryo-protective agents, Hepes, and long-term preservatives (0.02% Sodium Azide).
Isotype	IgG
Storage Instruction	Store at -20°C for long term storage. Avoid freeze-thaw cycles.

TARGET INFORMATION

Gene ID	14062
Gene Symbol	F2r
Uniprot ID	PAR1_MOUSE
Immunogen	Synthetic peptide taken within amino acid region 390-440 on mouse PAR1 protein.
Immunogen Region	390-440
Specificity	
Immunogen Sequence	



Western blot with Anti-PAR1 Antibody (STJ502110) with PAR1 peptide. Antibody at 1:500 dilution in buffer.