

Anti-NTN1 antibody (250-300) (STJ501984)

STJ501984

GENERAL INFORMATION

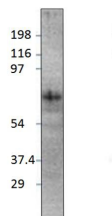
Product Type	Primary antibodies
Short Description	Rabbit polyclonal antibody anti-NTN1 (250-300) is suitable for use in ELISA and Western Blot research applications.
Applications	ELISA/WB
Host/Source	Rabbit
Reactivity	Human/Mouse/Rat

PRODUCT PROPERTIES

Clonality	Polyclonal
Clone ID	
Concentration	0.62-0.68 µg/µl
Conjugation	Unconjugated
Purification	Affinity Purified
Dilution Range	WB: 1:500 DB: 1:10, 000 ELISA: 1:10, 000 IP: 1:200
Formulation	Contains Tris, HCl/Glycine buffer pH 7.4-7.8, 30% Glycerol and 0.5% BSA, along with cryo-protective agents, Hepes, and long-term preservatives (0.02% Sodium Azide).
Isotype	IgG
Storage Instruction	Store at -20°C for long term storage. Avoid freeze-thaw cycles.

TARGET INFORMATION

Gene ID	9423
Gene Symbol	NTN1
Uniprot ID	NET1_HUMAN
Immunogen	Synthetic peptide taken within amino acid region 250-300 on human Netrin-1 protein.
Immunogen Region	250-300
Specificity	
Immunogen Sequence	



Western blot with Anti-NTN1 Antibody (STJ501984) and NTN1 peptide. Antibody at 1:500 dilution in buffer.