

Anti-CARD15 antibody (700-780) (STJ501933)

STJ501933

GENERAL INFORMATION

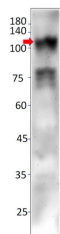
| | |
|--------------------------|--|
| Product Type | Primary antibodies |
| Short Description | Rabbit polyclonal antibody anti-CARD15 (700-780) is suitable for use in ELISA, Immunoprecipitation and Western Blot research applications. |
| Applications | ELISA/IP/WB |
| Host/Source | Rabbit |
| Reactivity | Mouse/Rat |

PRODUCT PROPERTIES

| | |
|-----------------------|--|
| Clonality | Polyclonal |
| Clone ID | |
| Concentration | 0.5-1.5 µg/µl |
| Conjugation | Unconjugated |
| Purification | Affinity Purified |
| Dilution Range | WB: 1:2, 500-1:5, 000 ELISA: 1:50, 000 IP: 1:200 IHC: 1:50-1:150 |
| Formulation | Contains Tris, HCl/Glycine buffer pH 7.4-7.8, 30% Glycerol and 0.5% BSA, along with cryo-protective agents, Hepes, and long-term preservatives (0.02% Sodium Azide). |
| Isotype | IgG |
| Storage | Store at -20°C for long term storage. Avoid freeze-thaw cycles. |
| Instruction | |

TARGET INFORMATION

| | |
|---------------------------|---|
| Gene ID | |
| Gene Symbol | Nod2 |
| Uniprot ID | NOD2_MOUSE |
| Immunogen | Synthetic peptide taken within amino acid region 700-780 on mouse Nucleotide-binding oligomerization domain-containing protein 2. |
| Immunogen Region | 700-780 |
| Specificity | |
| Immunogen Sequence | |



Western blot with Anti-CARD15 Antibody (STJ501933) of rat bone marrow at 1:500 dilution in buffer.

This product is suitable for in-vitro studies under the RESEARCH USE ONLY [RUO] licence. This product must not be used as for diagnostic or other medical purposes.
St John's Laboratory Ltd, Knowledge Dock Business Centre, University Way, London, E16 2RD | Tel: 0208 223 3081