

Anti-NKG2D antibody (180-230) (STJ501924)

STJ501924

GENERAL INFORMATION

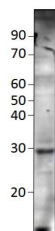
Product Type	Primary antibodies
Short Description	Rabbit polyclonal antibody anti-NKG2D (180-230) is suitable for use in ELISA and Western Blot research applications.
Applications	ELISA/WB
Host/Source	Rabbit
Reactivity	Bovine/Human/Monkey/Panda

PRODUCT PROPERTIES

Clonality	Polyclonal
Clone ID	
Concentration	0.55 µg/µl
Conjugation	Unconjugated
Purification	Affinity Purified
Dilution Range	WB: 1:500 DB: 1:10, 000 ELISA: 1:10, 000
Formulation	Contains Tris, HCl/Glycine buffer pH 7.4-7.8, 30% Glycerol and 0.5% BSA, along with cryo-protective agents, Hepes, and long-term preservatives (0.02% Sodium Azide).
Isotype	IgG
Storage Instruction	Store at -20°C for long term storage. Avoid freeze-thaw cycles.

TARGET INFORMATION

Gene ID	24934
Gene Symbol	Klrk1
Uniprot ID	NKG2D_RAT
Immunogen	Synthetic peptide taken within amino acid region 180-230 on rat NKG2D protein.
Immunogen Region	180-230
Specificity	
Immunogen Sequence	



Western blot with Anti-NKG2D Antibody (STJ501924) of THP cell at 1: dilution in buffer.