

## Anti-MSX1 antibody (46-64) (STJ501810)

STJ501810

### GENERAL INFORMATION

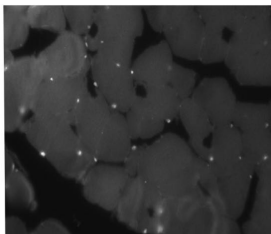
<b>Product Type</b>	Primary antibodies
<b>Short Description</b>	Rabbit polyclonal antibody anti-MSX1 (46-64) is suitable for use in ELISA, Immunohistochemistry, Immunoprecipitation and Western Blot research applications.
<b>Applications</b>	ELISA/IHC/IP/WB
<b>Host/Source</b>	Rabbit
<b>Reactivity</b>	Human/Mouse/Rat

### PRODUCT PROPERTIES

<b>Clonality</b>	Polyclonal
<b>Clone ID</b>	
<b>Concentration</b>	0.50-0.65 µg/µl
<b>Conjugation</b>	Unconjugated
<b>Purification</b>	Affinity Purified
<b>Dilution Range</b>	WB: 1:500-1:750 DB: 1:20, 000-1:50, 000 ELISA: 1:20, 000-1:50, 000 IP: 1:200 IHC: 1:50-1:150
<b>Formulation</b>	Contains Tris, HCl/Glycine buffer pH 7.4-7.8, 30% Glycerol and 0.5% BSA, along with cryo-protective agents, Hepes, and long-term preservatives (0.02% Sodium Azide).
<b>Isotype</b>	IgG
<b>Storage Instruction</b>	Store at -20°C for long term storage. Avoid freeze-thaw cycles.

### TARGET INFORMATION

<b>Gene ID</b>	4487
<b>Gene Symbol</b>	MSX1
<b>Uniprot ID</b>	MSX1_HUMAN
<b>Immunogen</b>	Synthetic peptide: DEEGAKPKVSPSLLPFSVE corresponding to amino acids 46-64 of Mouse Msx1 protein. The peptide was post synthetically modified and conjugated to KLH using hetero bifunctional cross linker for immunization of rabbits.
<b>Immunogen Region</b>	46-64
<b>Specificity</b>	
<b>Immunogen Sequence</b>	



Immunohistochemistry of human muscle with Anti-MSX1 primary antibody (STJ501810).

This product is suitable for in-vitro studies under the RESEARCH USE ONLY [RUO] licence. This product must not be used as for diagnostic or other medical purposes.  
St John's Laboratory Ltd, Knowledge Dock Business Centre, University Way, London, E16 2RD | Tel: 0208 223 3081