

## Anti-MRGX1 antibody (280-330) (STJ501798)

STJ501798

### GENERAL INFORMATION

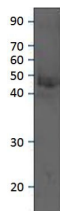
<b>Product Type</b>	Primary antibodies
<b>Short Description</b>	Rabbit polyclonal antibody anti-MRGX1 (280-330) is suitable for use in ELISA and Western Blot research applications.
<b>Applications</b>	ELISA/WB
<b>Host/Source</b>	Rabbit
<b>Reactivity</b>	Mouse/Rat

### PRODUCT PROPERTIES

<b>Clonality</b>	Polyclonal
<b>Clone ID</b>	
<b>Concentration</b>	0.52-0.67 µg/µl
<b>Conjugation</b>	Unconjugated
<b>Purification</b>	Affinity Purified
<b>Dilution Range</b>	WB: 1:500 DB: 1:10, 000 ELISA: 1:10, 000
<b>Formulation</b>	Contains Tris, HCl/Glycine buffer pH 7.4-7.8, 30% Glycerol and 0.5% BSA, along with cryo-protective agents, Hepes, and long-term preservatives (0.02% Sodium Azide).
<b>Isotype</b>	IgG
<b>Storage Instruction</b>	Store at -20°C for long term storage. Avoid freeze-thaw cycles.

### TARGET INFORMATION

<b>Gene ID</b>	282547
<b>Gene Symbol</b>	Mrgprx1
<b>Uniprot ID</b>	MRGX1_RAT
<b>Immunogen</b>	Synthetic peptide taken within amino acid region 280-330 on rat MrgX1 protein.
<b>Immunogen Region</b>	280-330
<b>Specificity</b>	
<b>Immunogen Sequence</b>	



Western blot with Anti-MRGX1 Antibody (STJ501798) with peptide, at 1:500 dilution in buffer.

This product is suitable for in-vitro studies under the RESEARCH USE ONLY [RUO] licence. This product must not be used as for diagnostic or other medical purposes.  
St John's Laboratory Ltd, Knowledge Dock Business Centre, University Way, London, E16 2RD | Tel: 0208 223 3081