

## Anti-OPRM1 antibody (405-455) (STJ501771)

STJ501771

### GENERAL INFORMATION

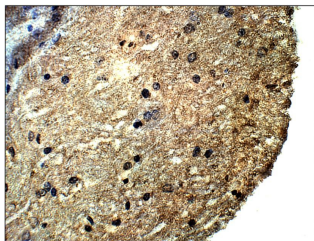
|                          |   |
|--------------------------|---|
| <b>Product Type</b>      | Primary antibodies  |
| <b>Short Description</b> | Rabbit polyclonal antibody anti-OPRM1 (405-455) is suitable for use in ELISA, Immunohistochemistry, Immunoprecipitation and Western Blot research applications. |
| <b>Applications</b>      | ELISA/IHC/IP/WB   |
| <b>Host/Source</b>       | Rabbit  |
| <b>Reactivity</b>        | Human/Mouse/Rat   |

### PRODUCT PROPERTIES

|                            |  |
|----------------------------|--|
| <b>Clonality</b>           | Polyclonal   |
| <b>Clone ID</b>            |  |
| <b>Concentration</b>       | 0.5 µg/µl  |
| <b>Conjugation</b>         | Unconjugated   |
| <b>Purification</b>        | Affinity Purified  |
| <b>Dilution Range</b>      | WB: 1:500<br>ELISA: 1:10, 000<br>IP: 1:200<br>IHC: 1:100   |
| <b>Formulation</b>         | Contains Tris, HCl/Glycine buffer pH 7.4-7.8, 30% Glycerol and 0.5% BSA, along with cryo-protective agents, Hepes, and long-term preservatives (0.02% Sodium Azide). |
| <b>Isotype</b>             | IgG  |
| <b>Storage Instruction</b> | Store at -20°C for long term storage. Avoid freeze-thaw cycles.  |

### TARGET INFORMATION

|                           |  |
|---------------------------|--|
| <b>Gene ID</b>            | 4988   |
| <b>Gene Symbol</b>        | OPRM1  |
| <b>Uniprot ID</b>         | OPRM_HUMAN   |
| <b>Immunogen</b>          | Synthetic peptide taken within amino acid region 405-455 on human Mu-type opiod receptor isoform MOR-1i protein. |
| <b>Immunogen Region</b>   | 405-455  |
| <b>Specificity</b>        |  |
| <b>Immunogen Sequence</b> |  |



Immunohistochemistry with Anti-OPRM1 Antibody (STJ501771) at 1:50 dilution in Buffer. DAB (brown) staining and Haematoxylin QS (blue) counterstain. 40X magnification on Leica DM4000B. FFPE section.

This product is suitable for in-vitro studies under the RESEARCH USE ONLY [RUO] licence. This product must not be used as for diagnostic or other medical purposes.  
St John's Laboratory Ltd, Knowledge Dock Business Centre, University Way, London, E16 2RD | Tel: 0208 223 3081