

## Anti-MeCP2 isoform 2 antibody (436-486) (STJ501735)

STJ501735

### GENERAL INFORMATION

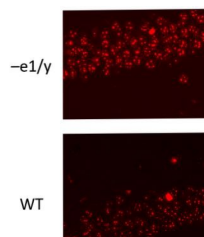
<b>Product Type</b>	Primary antibodies
<b>Short Description</b>	Rabbit polyclonal antibody anti-MeCP2 isoform 2 (436-486) is suitable for use in ELISA, Immunohistochemistry, Immunoprecipitation and Western Blot research applications.
<b>Applications</b>	ELISA/IHC/IP/WB
<b>Host/Source</b>	Rabbit
<b>Reactivity</b>	Human/Mouse/Rat

### PRODUCT PROPERTIES

<b>Clonality</b>	Polyclonal
<b>Clone ID</b>	
<b>Concentration</b>	0.50 µg/µl
<b>Conjugation</b>	Unconjugated
<b>Purification</b>	Affinity Purified
<b>Dilution Range</b>	WB: 1:500 ELISA: 1:10, 000 IP: 1:200 IHC: 1:50-1:100 IF: 1:100
<b>Formulation</b>	Contains Tris, HCl/Glycine buffer pH 7.4-7.8, 30% Glycerol and 0.5% BSA, along with cryo-protective agents, Hepes, and long-term preservatives (0.02% Sodium Azide).
<b>Isotype</b>	IgG
<b>Storage Instruction</b>	Store at -20°C for long term storage. Avoid freeze-thaw cycles.

### TARGET INFORMATION

<b>Gene ID</b>	4204
<b>Gene Symbol</b>	MECP2
<b>Uniprot ID</b>	MECP2_HUMAN
<b>Immunogen</b>	Synthetic peptide taken within amino acid region 436-486 on Methyl-CpG-binding protein 2 isoform 2 protein.
<b>Immunogen Region</b>	436-486
<b>Specificity</b>	Antibody is specific to MeCP2 e2 and has no cross reactivity with MeCP2 e1.
<b>Immunogen Sequence</b>	



Immunofluorescence with Anti-MeCP2 isoform 2 Antibody (STJ501735) on wild type and -e1/y male brains. Primary antibody is at 1:100 dilution in buffer, incubated overnight at RT. Secondary incubated for 2 hours at RT.