

Anti-MAPK6 antibody (480-530) (STJ501708)

STJ501708

GENERAL INFORMATION

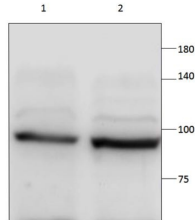
Product Type	Primary antibodies
Short Description	Chicken polyclonal antibody anti-MAPK6 (480-530) is suitable for use in ELISA, Immunoprecipitation and Western Blot research applications.
Applications	ELISA/IP/WB
Host/Source	Chicken
Reactivity	Human/Mouse/Rat

PRODUCT PROPERTIES

Clonality	Polyclonal
Clone ID	
Concentration	0.5 µg/µl
Conjugation	Unconjugated
Purification	Affinity Purified
Dilution Range	WB: 1:500 ELISA: 1:10,000 IP: 1:150
Formulation	Contains Tris, HCl/Glycine buffer pH 7.4-7.8, 30% Glycerol and 0.5% BSA, along with cryo-protective agents, Hepes, and long-term preservatives (0.02% Sodium Azide).
Isotype	IgY
Storage Instruction	Store at -20°C for long term storage. Avoid freeze-thaw cycles.

TARGET INFORMATION

Gene ID	5597
Gene Symbol	MAPK6
Uniprot ID	MK06_HUMAN
Immunogen	Synthetic peptide taken within amino acid region 480-530 on human Mitogen-activated protein kinase 6.
Immunogen Region	480-530
Specificity	
Immunogen Sequence	



Western blot with Anti-MAPK6 Antibody (STJ501708) of
1) Rat midbrain, 2) Rat cortex. Antibody is at 1:250
dilution in 1% milk.

This product is suitable for in-vitro studies under the RESEARCH USE ONLY [RUO] licence. This product must not be used as for diagnostic or other medical purposes.
St John's Laboratory Ltd, Knowledge Dock Business Centre, University Way, London, E16 2RD | Tel: 0208 223 3081