

Anti-MAPKAPK2 antibody (300-350) (STJ501699)

STJ501699

GENERAL INFORMATION

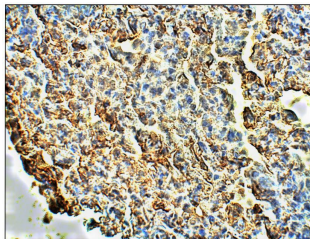
| | |
|--------------------------|---|
| Product Type | Primary antibodies |
| Short Description | Chicken polyclonal antibody anti-MAPKAPK2 (300-350) is suitable for use in ELISA, Immunohistochemistry, Immunoprecipitation and Western Blot research applications. |
| Applications | ELISA/IHC/IP/WB |
| Host/Source | Chicken |
| Reactivity | Human/Mouse/Rat |

PRODUCT PROPERTIES

| | |
|----------------------------|--|
| Clonality | Polyclonal |
| Clone ID | |
| Concentration | 0.5 µg/µl |
| Conjugation | Unconjugated |
| Purification | Affinity Purified |
| Dilution Range | WB: 1:500 ELISA: 1:10, 000 IP: 1:150 IHC: 1:50-1:150 |
| Formulation | Contains Tris, HCl/Glycine buffer pH 7.4-7.8, 30% Glycerol and 0.5% BSA, along with cryo-protective agents, Hepes, and long-term preservatives (0.02% Sodium Azide). |
| Isotype | IgY |
| Storage Instruction | Store at -20°C for long term storage. Avoid freeze-thaw cycles. |

TARGET INFORMATION

| | |
|---------------------------|---|
| Gene ID | 9261 |
| Gene Symbol | MAPKAPK2 |
| Uniprot ID | MAPK2_HUMAN |
| Immunogen | Synthetic peptide taken within amino acid region 300-350 on human Mitogen-activated protein kinase 2. |
| Immunogen Region | 300-350 |
| Specificity | |
| Immunogen Sequence | |



Immunohistochemistry of mouse lung with Anti-MAPKAPK2 primary antibody (STJ501699) at 1:50 dilution in Buffer. Section was treated with DAB and Haematoxylin stain. Magnification is at 40X.