

Anti-MAPK10 antibody (375-425) (STJ501681)

STJ501681

GENERAL INFORMATION

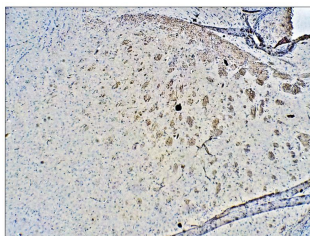
Product Type	Primary antibodies
Short Description	Chicken polyclonal antibody anti-MAPK10 (375-425) is suitable for use in ELISA, Immunohistochemistry, Immunoprecipitation and Western Blot research applications.
Applications	ELISA/IHC/IP/WB
Host/Source	Chicken
Reactivity	Human/Mouse/Rat

PRODUCT PROPERTIES

Clonality	Polyclonal
Clone ID	
Concentration	0.5 µg/µl
Conjugation	Unconjugated
Purification	Affinity Purified
Dilution Range	WB: 1:500 ELISA: 1:10, 000 IP: 1:150 IHC: 1:50-1:100
Formulation	Contains Tris, HCl/Glycine buffer pH 7.4-7.8, 30% Glycerol and 0.5% BSA, along with cryo-protective agents, Hepes, and long-term preservatives (0.02% Sodium Azide).
Isotype	IgY
Storage	Store at -20°C for long term storage. Avoid freeze-thaw cycles.
Instruction	

TARGET INFORMATION

Gene ID	5602
Gene Symbol	MAPK10
Uniprot ID	MK10_HUMAN
Immunogen	Synthetic peptide taken within amino acid region 375-425 on human Mitogen-activated protein kinase 10.
Immunogen Region	375-425
Specificity	
Immunogen Sequence	



Immunohistochemistry of mouse brain with Anti-MAPK10 primary antibody (STJ501681) at 1:50 dilution in Buffer. Section was treated with DAB and Haematoxylin stain. Magnification is at 5X.

This product is suitable for in-vitro studies under the RESEARCH USE ONLY [RUO] licence. This product must not be used as for diagnostic or other medical purposes.
St John's Laboratory Ltd, Knowledge Dock Business Centre, University Way, London, E16 2RD | Tel: 0208 223 3081