

Anti-MACF1 antibody (STJ501645)

STJ501645

GENERAL INFORMATION

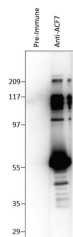
Product Type	Primary antibodies
Short Description	Rabbit polyclonal antibody anti-MACF1 is suitable for use in ELISA, Immunocytochemistry, Immunofluorescence and Western Blot research applications.
Applications	ELISA/ICC/IF/WB
Host/Source	Rabbit
Reactivity	Mouse/Rat

PRODUCT PROPERTIES

Clonality	Polyclonal
Clone ID	
Concentration	0.7 µg/µl
Conjugation	Unconjugated
Purification	Affinity Purified
Dilution Range	WB: 1:500 ELISA: 1:10, 000 IP: 1:200 IHC: 1:250 ICC: 1:250 IF: 1:250
Formulation	Contains Tris, HCl/Glycine buffer pH 7.4-7.8, 30% Glycerol and 0.5% BSA, along with cryo-protective agents, Hepes, and long-term preservatives (0.02% Sodium Azide).
Isotype	IgG
Storage Instruction	Store at -20°C for long term storage. Avoid freeze-thaw cycles.

TARGET INFORMATION

Gene ID	
Gene Symbol	
Uniprot ID	
Immunogen	Recombinant protein
Immunogen Region	
Specificity	
Immunogen Sequence	



Western blot with Anti-MACF1 Antibody (STJ501645) on recombinant ACF7 (1622-1817 of MACF1) at 1:1000 dilution in buffer.