

Anti-Luteinizing Hormone antibody (1-50) (STJ501597)

STJ501597

GENERAL INFORMATION

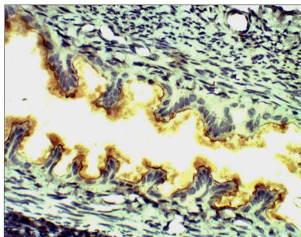
Product Type	Primary antibodies
Short Description	Rabbit polyclonal antibody anti-Luteinizing Hormone (1-50) is suitable for use in Confocal Microscopy, ELISA, Immunocytochemistry, Immunofluorescence, Immunohistochemistry, Immunoprecipitation and Western Blot research applications.
Applications	CM/ELISA/ICC/IF/IHC/IP/WB
Host/Source	Rabbit
Reactivity	Human/Mouse/Rat

PRODUCT PROPERTIES

Clonality	Polyclonal
Clone ID	
Concentration	0.59-0.72 µg/µl
Conjugation	Unconjugated
Purification	Affinity Purified
Dilution	WB: 1:500
Range	DB: 1:50, 000 ELISA: 1:50, 000 IP: 1:100 IHC: 1:250-1:2, 000 ICC: 1:250 IF: 1:250 CFM: 1:250
Formulation	Contains Tris, HCl/Glycine buffer pH 7.4-7.8, 30% Glycerol and 0.5% BSA, along with cryo-protective agents, Hepes, and long-term preservatives (0.02% Sodium Azide).
Isotype	IgG
Storage Instruction	Store at -20°C for long term storage. Avoid freeze-thaw cycles.

TARGET INFORMATION

Gene ID	
Gene Symbol	
Uniprot ID	
Immunogen	N-epitope synthetic peptide taken within amino acid region 1-50 on human LH protein.
Immunogen Region	1-50
Specificity	
Immunogen Sequence	



Immunohistochemistry of rat Ovary with Anti-Luteinizing Hormone primary antibody (STJ501597) at 1:100 dilution in buffer. Section was treated with DAB and Haematoxylin stain. Magnification is at 40X.

This product is suitable for in-vitro studies under the RESEARCH USE ONLY [RUO] licence. This product must not be used as for diagnostic or other medical purposes.
St John's Laboratory Ltd, Knowledge Dock Business Centre, University Way, London, E16 2RD | Tel: 0208 223 3081