

Anti-LAT2 antibody (40-90) (STJ501582)

STJ501582

GENERAL INFORMATION

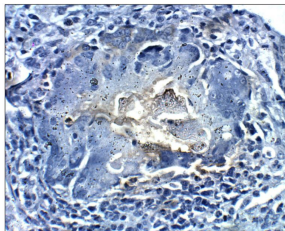
Product Type	Primary antibodies
Short Description	Rabbit polyclonal antibody anti-LAT2 (40-90) is suitable for use in ELISA, Immunohistochemistry, Immunoprecipitation and Western Blot research applications.
Applications	ELISA/IHC/IP/WB
Host/Source	Rabbit
Reactivity	Human/Monkey

PRODUCT PROPERTIES

Clonality	Polyclonal
Clone ID	
Concentration	0.54-0.72 µg/µl
Conjugation	Unconjugated
Purification	Affinity Purified
Dilution Range	WB: 1:500 DB: 1:10, 000 ELISA: 1:10, 000 IHC: 1:100
Formulation	Contains Tris, HCl/Glycine buffer pH 7.4-7.8, 30% Glycerol and 0.5% BSA, along with cryo-protective agents, Hepes, and long-term preservatives (0.02% Sodium Azide).
Isotype	IgG
Storage	Store at -20°C for long term storage. Avoid freeze-thaw cycles.
Instruction	

TARGET INFORMATION

Gene ID	7462
Gene Symbol	LAT2
Uniprot ID	NTAL_HUMAN
Immunogen	Synthetic peptide taken within amino acid region 40-90 on LAT2 protein.
Immunogen Region	40-90
Specificity	
Immunogen Sequence	



Immunohistochemistry of baboon lung with Anti-LAT2 primary antibody (STJ501582) at 1:100 dilution in Buffer. Section was treated with DAB and Haematoxylin stain. Magnification is at 40X.

This product is suitable for in-vitro studies under the RESEARCH USE ONLY [RUO] licence. This product must not be used as for diagnostic or other medical purposes.
St John's Laboratory Ltd, Knowledge Dock Business Centre, University Way, London, E16 2RD | Tel: 0208 223 3081