

## Anti-LARP7 antibody (360-410) (STJ501573)

STJ501573

### GENERAL INFORMATION

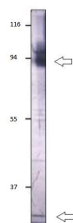
<b>Product Type</b>	Primary antibodies
<b>Short Description</b>	Rabbit polyclonal antibody anti-LARP7 (360-410) is suitable for use in ELISA, Immunoprecipitation and Western Blot research applications.
<b>Applications</b>	ELISA/IP/WB
<b>Host/Source</b>	Rabbit
<b>Reactivity</b>	Human

### PRODUCT PROPERTIES

<b>Clonality</b>	Polyclonal
<b>Clone ID</b>	
<b>Concentration</b>	0.50-0.75 µg/µl
<b>Conjugation</b>	Unconjugated
<b>Purification</b>	Affinity Purified
<b>Dilution Range</b>	WB: 1:500 DB: 1:4, 000 ELISA: 1:4, 000 IP: 1:150
<b>Formulation</b>	Contains Tris, HCl/Glycine buffer pH 7.4-7.8, 30% Glycerol and 0.5% BSA, along with cryo-protective agents, Hepes, and long-term preservatives (0.02% Sodium Azide).
<b>Isotype</b>	IgG
<b>Storage</b>	Store at -20°C for long term storage. Avoid freeze-thaw cycles.
<b>Instruction</b>	

### TARGET INFORMATION

<b>Gene ID</b>	51574
<b>Gene Symbol</b>	LARP7
<b>Uniprot ID</b>	LARP7_HUMAN
<b>Immunogen</b>	Synthetic peptide taken within amino acid region 360-410 on human LARP7 protein.
<b>Immunogen Region</b>	360-410
<b>Specificity</b>	
<b>Immunogen Sequence</b>	



Western blot with Anti-LARP7 Antibody (STJ501573) with peptide at 1:500 dilution in buffer.