

## Anti-LAMP2 antibody (260-310) (STJ501570)

STJ501570

### GENERAL INFORMATION

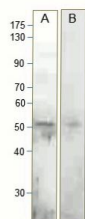
<b>Product Type</b>	Primary antibodies
<b>Short Description</b>	Rabbit polyclonal antibody anti-LAMP2 (260-310) is suitable for use in Dot Blot, ELISA, Immunohistochemistry, Immunoprecipitation and Western Blot research applications.
<b>Applications</b>	DB/ELISA/IHC/IP/WB
<b>Host/Source</b>	Rabbit
<b>Reactivity</b>	Human/Mouse/Rat

### PRODUCT PROPERTIES

<b>Clonality</b>	Polyclonal
<b>Clone ID</b>	
<b>Concentration</b>	0.68-0.70 µg/µl
<b>Conjugation</b>	Unconjugated
<b>Purification</b>	Affinity Purified
<b>Dilution Range</b>	WB: 1:500 DB: 1:4, 000 ELISA: 1:4, 000 IP: 1:150 IHC: 1:50-1:100
<b>Formulation</b>	Contains Tris, HCl/Glycine buffer pH 7.4-7.8, 30% Glycerol and 0.5% BSA, along with cryo-protective agents, Hepes, and long-term preservatives (0.02% Sodium Azide).
<b>Isotype</b>	IgG
<b>Storage Instruction</b>	Store at -20°C for long term storage. Avoid freeze-thaw cycles.

### TARGET INFORMATION

<b>Gene ID</b>	3920
<b>Gene Symbol</b>	LAMP2
<b>Uniprot ID</b>	LAMP2_HUMAN
<b>Immunogen</b>	Synthetic peptide taken within amino acid region 260-310 on human lysosomal membrane glycoprotein-2.
<b>Immunogen Region</b>	260-310
<b>Specificity</b>	
<b>Immunogen Sequence</b>	



Western blot with Anti-LAMP2 Antibody (STJ501570) of  
A) LAMP2 positive control, B) Mouse testis.