

Anti-MKI67 antibody (1250-1300) (STJ501528)

STJ501528

GENERAL INFORMATION

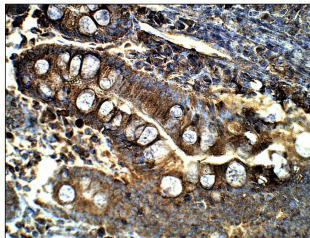
Product Type	Primary antibodies
Short Description	Rabbit polyclonal antibody anti-MKI67 (1250-1300) is suitable for use in ELISA, Immunoprecipitation and Western Blot research applications.
Applications	ELISA/IP/WB
Host/Source	Rabbit
Reactivity	Human/Monkey

PRODUCT PROPERTIES

Clonality	Polyclonal
Clone ID	
Concentration	0.55-0.75 µg/µl
Conjugation	Unconjugated
Purification	Affinity Purified
Dilution Range	WB: 1:500 DB: 1:10, 000 ELISA: 1:10, 000 IP: 1:200 IHC: 1:50-1:150
Formulation	Contains Tris, HCl/Glycine buffer pH 7.4-7.8, 30% Glycerol and 0.5% BSA, along with cryo-protective agents, Hepes, and long-term preservatives (0.02% Sodium Azide).
Isotype	IgG
Storage Instruction	Store at -20°C for long term storage. Avoid freeze-thaw cycles.

TARGET INFORMATION

Gene ID	4288
Gene Symbol	MKI67
Uniprot ID	KI67_HUMAN
Immunogen	Synthetic peptide taken within amino acid region 1250-1300 on human antigen Ki67 isoform 1.
Immunogen Region	1250-1300
Specificity	This antibody will detect both isoform 1 and isoform 2 in human.
Immunogen Sequence	



Immunohistochemistry of baboon small intestine with Anti-MKI67 primary antibody (STJ501528) at 1:50 dilution in Buffer. Section was treated with DAB and Haematoxylin stain. Magnification is at 40X.