

Anti-ITPR2 antibody (100-150) (STJ501515)

STJ501515

GENERAL INFORMATION

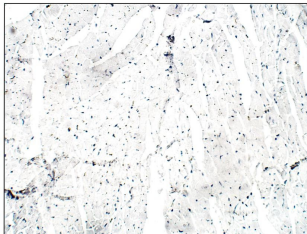
Product Type	Primary antibodies
Short Description	Rabbit polyclonal antibody anti-ITPR2 (100-150) is suitable for use in ELISA, Immunohistochemistry, Immunoprecipitation and Western Blot research applications.
Applications	ELISA/IHC/IP/WB
Host/Source	Rabbit
Reactivity	Human/Mouse/Rat

PRODUCT PROPERTIES

Clonality	Polyclonal
Clone ID	
Concentration	0.66 µg/µl
Conjugation	Unconjugated
Purification	Affinity Purified
Dilution Range	WB: 1:500 DB: 1:10, 000 ELISA: 1:10, 000 IP: 1:200 IHC: 1:50-1:100
Formulation	Contains Tris, HCl/Glycine buffer pH 7.4-7.8, 30% Glycerol and 0.5% BSA, along with cryo-protective agents, Hepes, and long-term preservatives (0.02% Sodium Azide).
Isotype	IgG
Storage Instruction	Store at -20°C for long term storage. Avoid freeze-thaw cycles.

TARGET INFORMATION

Gene ID	81678
Gene Symbol	Itpr2
Uniprot ID	ITPR2_RAT
Immunogen	Synthetic peptide taken within amino acid region 100-150 on rat Inositol 1, 4, 5-triphosphate receptor type 2 protein.
Immunogen Region	100-150
Specificity	
Immunogen Sequence	



Immunohistochemistry of mouse tissue with Anti-ITPR2 primary antibody (STJ501515) at 1:50 dilution in Buffer. Section was treated with DAB and Haematoxylin stain. Magnification is at 20X.