

Anti-IL23A antibody (162-179) (STJ501441)

STJ501441

GENERAL INFORMATION

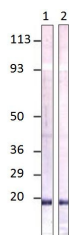
Product Type	Primary antibodies
Short Description	Rabbit polyclonal antibody anti-IL23A (162-179) is suitable for use in ELISA and Western Blot research applications.
Applications	ELISA/WB
Host/Source	Rabbit
Reactivity	Human/Mouse/Rat

PRODUCT PROPERTIES

Clonality	Polyclonal
Clone ID	
Concentration	0.65 µg/µl
Conjugation	Unconjugated
Purification	Affinity Purified
Dilution Range	WB: 1:250 DB: 1:10, 000 ELISA: 1:10, 000
Formulation	Contains Tris, HCl/Glycine buffer pH 7.4-7.8, 30% Glycerol and 0.5% BSA, along with cryo-protective agents, Hepes, and long-term preservatives (0.02% Sodium Azide).
Isotype	IgG
Storage Instruction	Store at -20°C for long term storage. Avoid freeze-thaw cycles.

TARGET INFORMATION

Gene ID	51561
Gene Symbol	IL23A
Uniprot ID	IL23A_HUMAN
Immunogen	Synthetic peptide corresponding to C terminal region amino acids 162-179 of Human IL23 P19. Peptide was covalently modified.
Immunogen Region	162-179
Specificity	Does not cross react with other Interleukins or other proteins.
Immunogen Sequence	



Western blot with Anti-IL23A Antibody (STJ501441) with peptide on at 1:500 dilution in buffer.