

Anti-IL17RA antibody (110-150) (STJ501422)

STJ501422

GENERAL INFORMATION

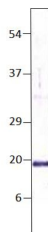
Product Type	Primary antibodies
Short Description	Rabbit polyclonal antibody anti-IL17RA (110-150) is suitable for use in Confocal Microscopy, ELISA, Immunocytochemistry, Immunofluorescence, Immunohistochemistry and Western Blot research applications.
Applications	CM/ELISA/ICC/IF/IHC/WB
Host/Source	Rabbit
Reactivity	Human/Mouse/Rat

PRODUCT PROPERTIES

Clonality	Polyclonal
Clone ID	
Concentration	0.65-0.95 µg/µl
Conjugation	Unconjugated
Purification	Affinity Purified
Dilution Range	WB: 1:500 DB: 1:10, 000 ELISA: 1:10, 000 IHC: 1:200 ICC: 1:200 IF: 1:200 CFM: 1:200
Formulation	Contains Tris, HCl/Glycine buffer pH 7.4-7.8, 30% Glycerol and 0.5% BSA, along with cryo-protective agents, Hepes, and long-term preservatives (0.02% Sodium Azide).
Isotype	IgG
Storage Instruction	Store at -20°C for long term storage. Avoid freeze-thaw cycles.

TARGET INFORMATION

Gene ID	23765
Gene Symbol	IL17RA
Uniprot ID	I17RA_HUMAN
Immunogen	Synthetic peptide taken within amino acid region 110-150 on human Interleukin-17A precursor protein.
Immunogen Region	110-150
Specificity	This antibody is specific for Interleukin-17A and will not cross react with any other Interleukin-17 variants.
Immunogen Sequence	



Western blot with Anti-IL17RA Antibody (STJ501422) with peptide at 1:750 dilution in buffer. 12% gel.

This product is suitable for in-vitro studies under the RESEARCH USE ONLY [RUO] licence. This product must not be used as for diagnostic or other medical purposes.
St John's Laboratory Ltd, Knowledge Dock Business Centre, University Way, London, E16 2RD | Tel: 0208 223 3081