

Anti-ERBB4 antibody (1225-1275) (STJ501323)

STJ501323

GENERAL INFORMATION

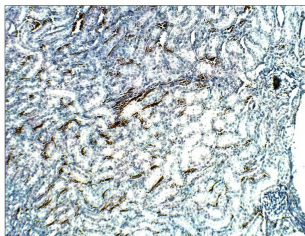
Product Type	Primary antibodies
Short Description	Rabbit polyclonal antibody anti-ERBB4 (1225-1275) is suitable for use in ELISA, Immunohistochemistry, Immunoprecipitation and Western Blot research applications.
Applications	ELISA/IHC/IP/WB
Host/Source	Rabbit
Reactivity	Human/Mouse/Rat

PRODUCT PROPERTIES

Clonality	Polyclonal
Clone ID	
Concentration	0.65-1.25 µg/µl
Conjugation	Unconjugated
Purification	Affinity Purified
Dilution Range	WB: 1:500 ELISA: 1:10, 000 IP: 1:200 IHC: 1:100
Formulation	Contains Tris, HCl/Glycine buffer pH 7.4-7.8, 30% Glycerol and 0.5% BSA, along with cryo-protective agents, Hepes, and long-term preservatives (0.02% Sodium Azide).
Isotype	IgG
Storage	Store at -20°C for long term storage. Avoid freeze-thaw cycles.
Instruction	

TARGET INFORMATION

Gene ID	2066
Gene Symbol	ERBB4
Uniprot ID	ERBB4_HUMAN
Immunogen	Synthetic peptide taken within amino acid region 1225-1275 on human Receptor tyrosine-protein kinase erbB-4.
Immunogen Region	1225-1275
Specificity	
Immunogen Sequence	



Immunohistochemistry of rat kidney with Anti-ERBB4 primary antibody (STJ501323) at 1:100 dilution in Buffer. Section was treated with DAB and Haematoxylin stain. Magnification is at 10X.