

Anti-GRK6 antibody (500-550) (STJ501286)

STJ501286

GENERAL INFORMATION

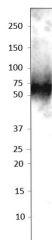
Product Type	Primary antibodies
Short Description	Rabbit polyclonal antibody anti-GRK6 (500-550) is suitable for use in ELISA, Immunohistochemistry, Immunoprecipitation and Western Blot research applications.
Applications	ELISA/IHC/IP/WB
Host/Source	Rabbit
Reactivity	Human/Mouse/Rat

PRODUCT PROPERTIES

Clonality	Polyclonal
Clone ID	
Concentration	0.5-1.5 µg/µl
Conjugation	Unconjugated
Purification	Affinity Purified
Dilution Range	WB: 1:2, 500-1:5, 000 ELISA: 1:50, 000 IP: 1:200
Formulation	Contains Tris, HCl/Glycine buffer pH 7.4-7.8, 30% Glycerol and 0.5% BSA, along with cryo-protective agents, Hepes, and long-term preservatives (0.02% Sodium Azide).
Isotype	IgG
Storage Instruction	Store at -20°C for long term storage. Avoid freeze-thaw cycles.

TARGET INFORMATION

Gene ID	2870
Gene Symbol	GRK6
Uniprot ID	GRK6_HUMAN
Immunogen	Synthetic peptide taken within amino acid region 500-550 on human G protein-coupled receptor kinase 6 protein.
Immunogen Region	500-550
Specificity	
Immunogen Sequence	



Western blot with Anti-GRK6 Antibody (STJ501286) on HeLa cell extract at 1:500 dilution in buffer.