

Anti-FYN antibody (240-290) (STJ501109)

STJ501109

GENERAL INFORMATION

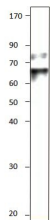
Product Type	Primary antibodies
Short Description	Rabbit polyclonal antibody anti-FYN (240-290) is suitable for use in ELISA and Western Blot research applications.
Applications	ELISA/WB
Host/Source	Rabbit
Reactivity	Human/Mouse/Rat

PRODUCT PROPERTIES

Clonality	Polyclonal
Clone ID	
Concentration	0.55-0.75 µg/µl
Conjugation	Unconjugated
Purification	Affinity Purified
Dilution Range	WB: 1:500 DB: 1:10, 000 ELISA: 1:10, 000 IP: 1:200
Formulation	Contains Tris, HCl/Glycine buffer pH 7.4-7.8, 30% Glycerol and 0.5% BSA, along with cryo-protective agents, Hepes, and long-term preservatives (0.02% Sodium Azide).
Isotype	IgG
Storage Instruction	Store at -20°C for long term storage. Avoid freeze-thaw cycles.

TARGET INFORMATION

Gene ID	2534
Gene Symbol	FYN
Uniprot ID	FYN_HUMAN
Immunogen	Synthetic peptide taken within amino acid region 240-290 on human Fyn protein.
Immunogen Region	240-290
Specificity	
Immunogen Sequence	



Western blot with Anti-FYN Antibody (STJ501109) of SKNMC at 1:500 dilution in buffer.