

Anti-FOLR1 antibody (200-250) (STJ501070)

STJ501070

GENERAL INFORMATION

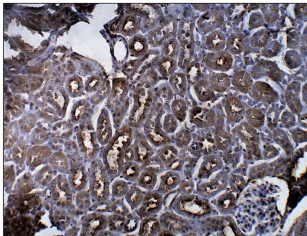
Product Type	Primary antibodies
Short Description	Rabbit polyclonal antibody anti-FOLR1 (200-250) is suitable for use in ELISA, Immunohistochemistry, Immunoprecipitation and Western Blot research applications.
Applications	ELISA/IHC/IP/WB
Host/Source	Rabbit
Reactivity	Mouse/Rat

PRODUCT PROPERTIES

Clonality	Polyclonal
Clone ID	
Concentration	0.5 µg/µl
Conjugation	Unconjugated
Purification	Affinity Purified
Dilution Range	WB: 1:500 ELISA: 1:50, 000 IP: 1:200 IHC: 1:50-1:150 IF: 1:50-1:150
Formulation	Contains Tris, HCl/Glycine buffer pH 7.4-7.8, 30% Glycerol and 0.5% BSA, along with cryo-protective agents, Hepes, and long-term preservatives (0.02% Sodium Azide).
Isotype	IgG
Storage Instruction	Store at -20°C for long term storage. Avoid freeze-thaw cycles.

TARGET INFORMATION

Gene ID	14275
Gene Symbol	Folr1
Uniprot ID	FOLR1_MOUSE
Immunogen	Synthetic peptide taken within amino acid region 200-250 on mouse Folate receptor alpha protein.
Immunogen Region	200-250
Specificity	
Immunogen Sequence	



Immunohistochemistry of mouse kidney with Anti-FOLR1 primary antibody (STJ501070) at 1:50 dilution in Buffer. Section was treated with DAB and Haematoxylin stain. Magnification is at 20X.

This product is suitable for in-vitro studies under the RESEARCH USE ONLY [RUO] licence. This product must not be used as for diagnostic or other medical purposes.
St John's Laboratory Ltd, Knowledge Dock Business Centre, University Way, London, E16 2RD | Tel: 0208 223 3081