

Anti-FLI1 antibody (1-50) (STJ501052)

STJ501052

GENERAL INFORMATION

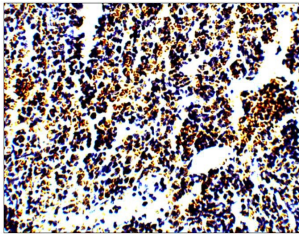
Product Type	Primary antibodies
Short Description	Rabbit polyclonal antibody anti-FLI1 (1-50) is suitable for use in Confocal Microscopy, ELISA, Immunocytochemistry, Immunofluorescence, Immunohistochemistry, Immunoprecipitation and Western Blot research applications.
Applications	CM/ELISA/ICC/IF/IHC/IP/WB
Host/Source	Rabbit
Reactivity	Cat/Human/Mouse/Pig/Rat

PRODUCT PROPERTIES

Clonality	Polyclonal
Clone ID	
Concentration	0.55-0.75 µg/µl
Conjugation	Unconjugated
Purification	Affinity Purified
Dilution	WB: 1:500
Range	ELISA: 1:10, 000 IP: 1:150 IHC: 1:100 ICC: 1:100 IF: 1:100
Formulation	Contains Tris, HCl/Glycine buffer pH 7.4-7.8, 30% Glycerol and 0.5% BSA, along with cryo-protective agents, Hepes, and long-term preservatives (0.02% Sodium Azide).
Isotype	IgG
Storage	Store at -20°C for long term storage. Avoid freeze-thaw cycles.
Instruction	

TARGET INFORMATION

Gene ID	2313
Gene Symbol	FLI1
Uniprot ID	FLI1_HUMAN
Immunogen	Synthetic peptide taken within amino acid region 1-50 on human Friend Leukemia integration 1 transcription factor protein.
Immunogen Region	1-50
Specificity	
Immunogen Sequence	



Immunohistochemistry of rat spleen with Anti-FLI1 primary antibody (STJ501052) at 1:100 dilution in Buffer. Section was treated with DAB and Haematoxylin stain. Magnification is at 20X.