

Anti-KMT6/EZH2 antibody (60-110) (STJ500978)

STJ500978

GENERAL INFORMATION

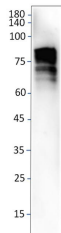
| | |
|--------------------------|--|
| Product Type | Primary antibodies |
| Short Description | Rabbit polyclonal antibody anti-KMT6/EZH2 (60-110) is suitable for use in ELISA, Immunohistochemistry, Immunoprecipitation and Western Blot research applications. |
| Applications | ELISA/IHC/IP/WB |
| Host/Source | Rabbit |
| Reactivity | Human/Mouse/Rat |

PRODUCT PROPERTIES

| | |
|----------------------------|--|
| Clonality | Polyclonal |
| Clone ID | |
| Concentration | 0.5-1.5 µg/µl |
| Conjugation | Unconjugated |
| Purification | Affinity Purified |
| Dilution Range | WB: 1:2, 500-1:5, 000 ELISA: 1:50, 000 IP: 1:200 IHC: 1:50-1:200 |
| Formulation | Contains Tris, HCl/Glycine buffer pH 7.4-7.8, 30% Glycerol and 0.5% BSA, along with cryo-protective agents, Hepes, and long-term preservatives (0.02% Sodium Azide). |
| Isotype | IgG |
| Storage Instruction | Store at -20°C for long term storage. Avoid freeze-thaw cycles. |

TARGET INFORMATION

| | |
|---------------------------|--|
| Gene ID | |
| Gene Symbol | |
| Uniprot ID | |
| Immunogen | Synthetic peptide taken within amino acid region 60-110 on human Histone-lysine N-methyltransferase EZH protein. |
| Immunogen Region | 60-110 |
| Specificity | |
| Immunogen Sequence | |



Western blot with Anti-KMT6 / EZH2 Antibody (STJ500978) of rat bone marrow at 1:500 dilution in buffer.