

Anti-ERG antibody (50-100) (STJ500949)

STJ500949

GENERAL INFORMATION

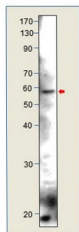
Product Type	Primary antibodies
Short Description	Rabbit polyclonal antibody anti-ERG (50-100) is suitable for use in ELISA, Immunohistochemistry, Immunoprecipitation and Western Blot research applications.
Applications	ELISA/IHC/IP/WB
Host/Source	Rabbit
Reactivity	Human/Mouse/Rat

PRODUCT PROPERTIES

Clonality	Polyclonal
Clone ID	
Concentration	0.55-0.75 µg/µl
Conjugation	Unconjugated
Purification	Affinity Purified
Dilution Range	WB: 1:500 DB: 1:10, 000 ELISA: 1:10, 000 IP: 1:200 IHC: 1:50-1:150
Formulation	Contains Tris, HCl/Glycine buffer pH 7.4-7.8, 30% Glycerol and 0.5% BSA, along with cryo-protective agents, Hepes, and long-term preservatives (0.02% Sodium Azide).
Isotype	IgG
Storage Instruction	Store at -20°C for long term storage. Avoid freeze-thaw cycles.

TARGET INFORMATION

Gene ID	2078
Gene Symbol	ERG
Uniprot ID	ERG_HUMAN
Immunogen	Synthetic peptide taken within amino acid region 50-100 on human Transcriptional regulator ERG protein.
Immunogen Region	50-100
Specificity	This is antibody will detect isoforms 1, 2, and 3. Will not detect ERG isoform 4.
Immunogen Sequence	



Western blot with Anti-ERG Antibody (STJ500949) with peptide on at 1:500 dilution in buffer.