

## Anti-ERG antibody (400-450) (STJ500948)

STJ500948

### GENERAL INFORMATION

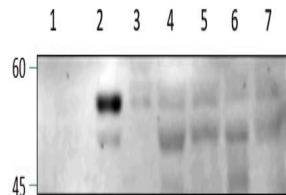
<b>Product Type</b>	Primary antibodies
<b>Short Description</b>	Rabbit polyclonal antibody anti-ERG (400-450) is suitable for use in ELISA, Immunoprecipitation and Western Blot research applications.
<b>Applications</b>	ELISA/IP/WB
<b>Host/Source</b>	Rabbit
<b>Reactivity</b>	Human/Mouse/Rat

### PRODUCT PROPERTIES

<b>Clonality</b>	Polyclonal
<b>Clone ID</b>	
<b>Concentration</b>	0.55-0.75 µg/µl
<b>Conjugation</b>	Unconjugated
<b>Purification</b>	Affinity Purified
<b>Dilution Range</b>	WB: 1:500 DB: 1:10, 000 ELISA: 1:10, 000 IP: 1:200
<b>Formulation</b>	Contains Tris, HCl/Glycine buffer pH 7.4-7.8, 30% Glycerol and 0.5% BSA, along with cryo-protective agents, Hepes, and long-term preservatives (0.02% Sodium Azide).
<b>Isotype</b>	IgG
<b>Storage Instruction</b>	Store at -20°C for long term storage. Avoid freeze-thaw cycles.

### TARGET INFORMATION

<b>Gene ID</b>	2078
<b>Gene Symbol</b>	ERG
<b>Uniprot ID</b>	ERG_HUMAN
<b>Immunogen</b>	Synthetic peptide taken within amino acid region 400-450 on human Transcriptional regulator ERG protein.
<b>Immunogen Region</b>	400-450
<b>Specificity</b>	This is a Pan ERG antibody and will label isoforms 1, 2, 3, and 4.
<b>Immunogen Sequence</b>	



Western blot with Anti-ERG Antibody (STJ500948) on rat tissues: Spleen, Testis, Ovary, Mid brain, Cerebellum, Spinal cord and Cerebral cortex, at 1:250 dilution in buffer.

This product is suitable for in-vitro studies under the RESEARCH USE ONLY [RUO] licence. This product must not be used as for diagnostic or other medical purposes.  
St John's Laboratory Ltd, Knowledge Dock Business Centre, University Way, London, E16 2RD | Tel: 0208 223 3081