

Anti-Ephrin Receptor A4 antibody (550-650) (STJ500915)

GENERAL INFORMATION

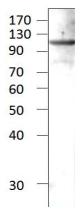
Product Type	Primary antibodies
Short Description	Rabbit polyclonal antibody anti-Ephrin Receptor A4 (550-650) is suitable for use in ELISA and Western Blot research applications.
Applications	ELISA/WB
Host/Source	Rabbit
Reactivity	Human/Mouse

PRODUCT PROPERTIES

Clonality	Polyclonal
Clone ID	
Concentration	0.55-0.75 µg/µl
Conjugation	Unconjugated
Purification	Affinity Purified
Dilution Range	WB: 1:500 DB: 1:10, 000 ELISA: 1:10, 000
Formulation	Contains Tris, HCl/Glycine buffer pH 7.4-7.8, 30% Glycerol and 0.5% BSA, along with cryo-protective agents, Hepes, and long-term preservatives (0.02% Sodium Azide).
Isotype	IgG
Storage Instruction	Store at -20°C for long term storage. Avoid freeze-thaw cycles.

TARGET INFORMATION

Gene ID	13838
Gene Symbol	Epha4
Uniprot ID	EPHA4_MOUSE
Immunogen	Synthetic peptide taken within amino acid region 550-650 on human EphA R4 protein.
Immunogen Region	550-650
Specificity	
Immunogen Sequence	



Western blot with Anti-Ephrin Receptor A4 Antibody (STJ500915) of SKNMC cell at 1:500 dilution in buffer.