

Anti-ELOVL4 antibody (107-121) (STJ500876)

STJ500876

GENERAL INFORMATION

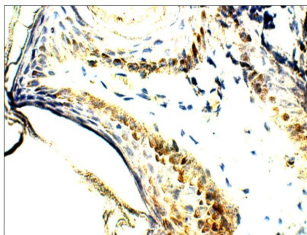
| | |
|--------------------------|--|
| Product Type | Primary antibodies |
| Short Description | Rabbit polyclonal antibody anti-ELOVL4 (107-121) is suitable for use in ELISA, Immunohistochemistry, Immunoprecipitation and Western Blot research applications. |
| Applications | ELISA/IHC/IP/WB |
| Host/Source | Rabbit |
| Reactivity | Human/Mouse/Rat |

PRODUCT PROPERTIES

| | |
|----------------------------|--|
| Clonality | Polyclonal |
| Clone ID | |
| Concentration | 0.68 µg/µl |
| Conjugation | Unconjugated |
| Purification | Affinity Purified |
| Dilution Range | WB: 1:500 IP: 1:200 IHC: 1:100 |
| Formulation | Contains Tris, HCl/Glycine buffer pH 7.4-7.8, 30% Glycerol and 0.5% BSA, along with cryo-protective agents, Hepes, and long-term preservatives (0.02% Sodium Azide). |
| Isotype | IgG |
| Storage Instruction | Store at -20°C for long term storage. Avoid freeze-thaw cycles. |

TARGET INFORMATION

| | |
|---------------------------|---|
| Gene ID | 6785 |
| Gene Symbol | ELOVL4 |
| Uniprot ID | ELOVL4_HUMAN |
| Immunogen | Synthetic peptide corresponding to internal sequence amino acids 107-121 of Human ELOVL4. |
| Immunogen Region | 107-121 |
| Specificity | |
| Immunogen Sequence | |



Immunohistochemistry of human tissue with Anti-ELOVL4 primary antibody (STJ500876) at 1:100 dilution in Buffer. Section was treated with DAB and Haematoxylin stain. Magnification is at 40X.