

Anti-E2F1 antibody (58-93) (STJ500810)

STJ500810

GENERAL INFORMATION

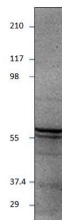
| | |
|--------------------------|---|
| Product Type | Primary antibodies |
| Short Description | Rabbit polyclonal antibody anti-E2F1 (58-93) is suitable for use in ELISA and Western Blot research applications. |
| Applications | ELISA/WB |
| Host/Source | Rabbit |
| Reactivity | Human/Mouse/Rat |

PRODUCT PROPERTIES

| | |
|-----------------------|--|
| Clonality | Polyclonal |
| Clone ID | |
| Concentration | 0.65 µg/µl |
| Conjugation | Unconjugated |
| Purification | Affinity Purified |
| Dilution Range | WB: 1:1, 000 DB: 1:10, 000 ELISA: 1:10, 000 IP: 1:200 |
| Formulation | Contains Tris, HCl/Glycine buffer pH 7.4-7.8, 30% Glycerol and 0.5% BSA, along with cryo-protective agents, Hepes, and long-term preservatives (0.02% Sodium Azide). |
| Isotype | IgG |
| Storage | Store at -20°C for long term storage. Avoid freeze-thaw cycles. |
| Instruction | |

TARGET INFORMATION

| | |
|---------------------------|---|
| Gene ID | 1869 |
| Gene Symbol | E2F1 |
| Uniprot ID | E2F1_HUMAN |
| Immunogen | Synthetic peptide corresponding to amino acids 58-93 of Human E2F1. |
| Immunogen Region | 58-93 |
| Specificity | |
| Immunogen Sequence | |



Western blot with Anti-E2F1 Antibody (STJ500810) with peptide on at 1:500 dilution in buffer.