

## Anti-DYRK1A antibody (300-350) (STJ500804)

STJ500804

### GENERAL INFORMATION

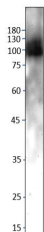
<b>Product Type</b>	Primary antibodies
<b>Short Description</b>	Rabbit polyclonal antibody anti-DYRK1A (300-350) is suitable for use in ELISA, Immunohistochemistry, Immunoprecipitation and Western Blot research applications.
<b>Applications</b>	ELISA/IHC/IP/WB
<b>Host/Source</b>	Rabbit
<b>Reactivity</b>	Human/Monkey/Mouse/Rat

### PRODUCT PROPERTIES

<b>Clonality</b>	Polyclonal
<b>Clone ID</b>	
<b>Concentration</b>	0.5 µg/µl
<b>Conjugation</b>	Unconjugated
<b>Purification</b>	Affinity Purified
<b>Dilution Range</b>	WB: 1:500 ELISA: 1:10, 000 IP: 1:150 IHC: 1:50-1:150
<b>Formulation</b>	Contains Tris, HCl/Glycine buffer pH 7.4-7.8, 30% Glycerol and 0.5% BSA, along with cryo-protective agents, Hepes, and long-term preservatives (0.02% Sodium Azide).
<b>Isotype</b>	IgG
<b>Storage</b>	Store at -20°C for long term storage. Avoid freeze-thaw cycles.
<b>Instruction</b>	

### TARGET INFORMATION

<b>Gene ID</b>	1859
<b>Gene Symbol</b>	DYRK1A
<b>Uniprot ID</b>	DYR1A_HUMAN
<b>Immunogen</b>	Synthetic peptide taken within amino acid region 300-350 on human Dual specificity tyrosine-phosphorylation-regulated kinase 1A.
<b>Immunogen Region</b>	300-350
<b>Specificity</b>	
<b>Immunogen Sequence</b>	



Western blot with Anti-DYRK1A Antibody (STJ500804) of rat hippocampus at 1:250 dilution in buffer.