

Anti-DDX6 antibody (433-483) (STJ500744)

STJ500744

GENERAL INFORMATION

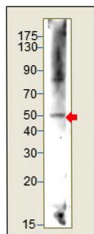
Product Type	Primary antibodies
Short Description	Rabbit polyclonal antibody anti-DDX6 (433-483) is suitable for use in Dot Blot, ELISA, Immunoprecipitation and Western Blot research applications.
Applications	DB/ELISA/IP/WB
Host/Source	Rabbit
Reactivity	Chicken/Human/Mouse/Rat

PRODUCT PROPERTIES

Clonality	Polyclonal
Clone ID	
Concentration	0.68-0.70 µg/µl
Conjugation	Unconjugated
Purification	Affinity Purified
Dilution Range	WB: 1:500 DB: 1:4, 000 ELISA: 1:4, 000 IP: 1:150
Formulation	Contains Tris, HCl/Glycine buffer pH 7.4-7.8, 30% Glycerol and 0.5% BSA, along with cryo-protective agents, Hepes, and long-term preservatives (0.02% Sodium Azide).
Isotype	IgG
Storage	Store at -20°C for long term storage. Avoid freeze-thaw cycles.
Instruction	

TARGET INFORMATION

Gene ID	1656
Gene Symbol	DDX6
Uniprot ID	DDX6_HUMAN
Immunogen	Synthetic peptide taken within amino acid region 433-483 on probable ATP-dependent RNA helicase DDX6 protein.
Immunogen Region	433-483
Specificity	
Immunogen Sequence	



Western blot with Anti-DDX6 Antibody (STJ500744) of Hu cell at 1:500 dilution in buffer.

This product is suitable for in-vitro studies under the RESEARCH USE ONLY [RUO] licence. This product must not be used as for diagnostic or other medical purposes.
St John's Laboratory Ltd, Knowledge Dock Business Centre, University Way, London, E16 2RD | Tel: 0208 223 3081