

Anti-DCC antibody (1330-1380) (STJ500738)

STJ500738

GENERAL INFORMATION

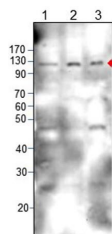
Product Type	Primary antibodies
Short Description	Rabbit polyclonal antibody anti-DCC (1330-1380) is suitable for use in ELISA and Western Blot research applications.
Applications	ELISA/WB
Host/Source	Rabbit
Reactivity	Human/Mouse/Rat

PRODUCT PROPERTIES

Clonality	Polyclonal
Clone ID	
Concentration	0.5-.70 µg/µl
Conjugation	Unconjugated
Purification	Affinity Purified
Dilution Range	WB: 1:500 DB: 1:10, 000 ELISA: 1:10, 000 IP: 1:200
Formulation	Contains Tris, HCl/Glycine buffer pH 7.4-7.8, 30% Glycerol and 0.5% BSA, along with cryo-protective agents, Hepes, and long-term preservatives (0.02% Sodium Azide).
Isotype	IgG
Storage Instruction	Store at -20°C for long term storage. Avoid freeze-thaw cycles.

TARGET INFORMATION

Gene ID	1630
Gene Symbol	DCC
Uniprot ID	DCC_HUMAN
Immunogen	Synthetic peptide taken within amino acid region 1330-1380 on rat DCC protein.
Immunogen Region	1330-1380
Specificity	
Immunogen Sequence	



Western blot with Anti-DCC Antibody (STJ500738). 1) peptide, 2) SKNMC and 3) RA treated SHSYSY cells at 1:500 dilution in buffer.