

Anti-Dopamine D5 Receptor antibody (428-478) (STJ500720)

STJ500720

GENERAL INFORMATION

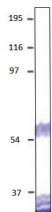
Product Type	Primary antibodies
Short Description	Rabbit polyclonal antibody anti-Dopamine D5 Receptor (428-478) is suitable for use in ELISA and Western Blot research applications.
Applications	ELISA/WB
Host/Source	Rabbit
Reactivity	Mouse/Rat

PRODUCT PROPERTIES

Clonality	Polyclonal
Clone ID	
Concentration	0.5-1.5 µg/µl
Conjugation	Unconjugated
Purification	Affinity Purified
Dilution Range	WB: 1:1, 000-1:1, 5000 DB: 1:50, 000 ELISA: 1:50, 000 IP: 1:200
Formulation	Contains Tris, HCl/Glycine buffer pH 7.4-7.8, 30% Glycerol and 0.5% BSA, along with cryo-protective agents, Hepes, and long-term preservatives (0.02% Sodium Azide).
Isotype	IgG
Storage Instruction	Store at -20°C for long term storage. Avoid freeze-thaw cycles.

TARGET INFORMATION

Gene ID	13492
Gene Symbol	Drd5
Uniprot ID	DRD5_MOUSE
Immunogen	Synthetic peptide taken within amino acid region 428-478 on mouse Dopamine Receptor D5 protein.
Immunogen Region	428-478
Specificity	
Immunogen Sequence	



Western blot with Anti-Dopamine D5 Receptor Antibody (STJ500720) with peptide on at 1:750 dilution in buffer.

This product is suitable for in-vitro studies under the RESEARCH USE ONLY [RUO] licence. This product must not be used as for diagnostic or other medical purposes.
St John's Laboratory Ltd, Knowledge Dock Business Centre, University Way, London, E16 2RD | Tel: 0208 223 3081